

RET/AISG Cable Installation



Installation Procedure

Review the instructions carefully prior to assembly. Make sure that the area for assembly is clean and free from any type of debris. Dust, grease or moisture will affect the overall performance of the RET Cable. **Warning:** Ensure cable connector is properly seated so the coupling nut screws easily onto the mating connector. Failure to do so may cause cross threading, which will void the warranty.

1. Remove the dust cap on the female connector. (Fig 1)
2. An O-ring is packaged inside the female dust cap. (Fig 2)
3. Install the O-ring gasket inside the female connector. (Fig 3)
4. Use the male end of the cable to fully seat the O-ring into the female connector. (Fig 4)
5. Verify the RET motor you are installing onto has a male connector.
6. Press the female connector into the RET motor connector.
7. Hold in place with one hand and screw the knurled coupling nut with the other hand. (Fig 5)
8. Hand tighten the coupling nut.
9. Wrap the knurled coupling nut with a rag and torque tighten to .73 lbs/ft with 123 wrench part number 123-171-Torque. (Fig 6)

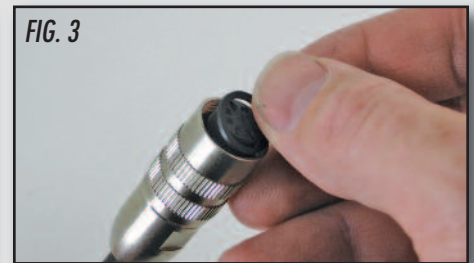
These instructions apply to series 66-170, 123-170, 123-171, 123-172 RET cables



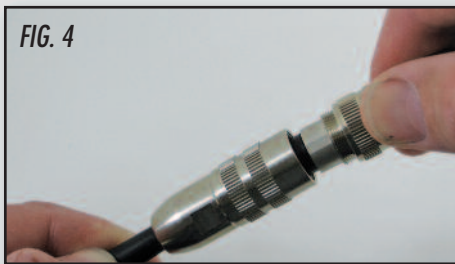
Remove cap



Locate O-ring



Install O-ring



Seat O-Ring



Hand tighten



Torque tighten

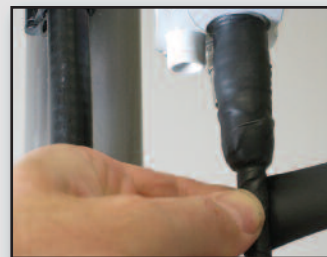
Proceed with weather wrapping per OEM recommendations



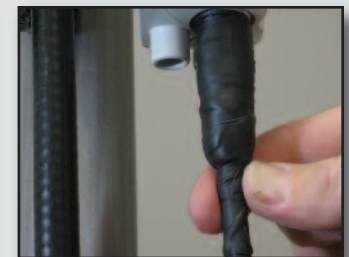
Use 10" 123-150-15-Black EasyWrap™ Tape.



Wrap from the top down to bottom up. Cover the mating area of both connectors. Refer to 123-150-15-Black detailed instructions.



Overlap tape 1/2 the width of the tape while stretching and spiral wrapping. Hold wrap and pull to cut tape.



Press cut flap firmly to the tape. Tape will only fuse to itself.



www.123eWireless.com • Tel: 949/888-5548 • Fax: 949/888-5582
Domestic Design & Manufacturing of Integrated Wireless Solutions

XtremeWeather™ RET



123-171-XX Series XtremeWeather™ RET Assembly

The XtremeWeather™ RET assembly is an integrated design where the connector and the cable are fused into one assembly, making this solution highly resistant to moisture, contamination, and corrosion.

- The ONLY IP 68 rated RET connector available today!
- A fused gasket sealed body will eliminate the chance of moisture running down the cable and seeping into the connector.
- Gasket encapsulated contacts and gasket sealed mating face will eliminate the chance of moisture seeping into the connector.

Specifications

AISG Compatible	v1.1 v2.0
Connectors	2 x 8 pin IEC 60130-9, female/male
Tightening torque for attaching connectors	0.5–1 Nm (0.36–0.73 lb/ft) hand tighten only
Construction	Shielded 1 x twisted pair 100 Ω/1 MHz 2 x power supply, 1 x ground AWM style 20317 I/II A/B + 20549 + 20233
Rated current	4 A (power supply) (at 50°C)
Temperature range	-40° to +80°C (fixed position)
Protection class	IP 68
Cable diameter	0.3 inch (8 mm)
Flammability	VL 1581 VW-1 CSA FT-1
Minimum bending radius	one time 2.4 inches (60 mm) several times 4.8 inches (120 mm)

The male and female connectors of all 123eWireless RET products are compatible components designed to operate under the environment conditions for non-weather protected locations.



XtremeWeather™
RET Assembly 123-171

123-171-TORQUE

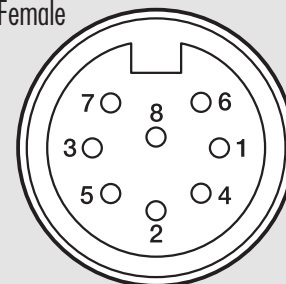
123e Part # Length

123-171-005	(0.5 m)
123-171-01	(1 m)
123-171-02	(2 m)
123-171-03	(3 m)
123-171-05	(5 m)
123-171-10	(10 m)
123-171-20	(20 m)
123-171-25	(25 m)
123-171-40	(40 m)
123-171-50	(50 m)
123-171-60	(60 m)
123-171-80	(80 m)
123-171-100	(100 m)
123-171-150	(150 m)
123-171-200	(200 m)

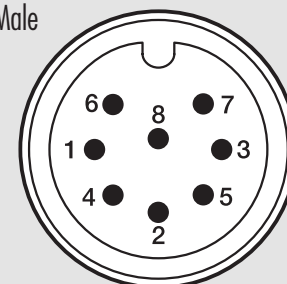
**Custom lengths available
with same day shipping



Female



Male



www.123eWireless.com • Tel: 949/888-5548 • Fax: 949/888-5582
Domestic Design & Manufacturing of Integrated Wireless Solutions